

YOU ARE HERE!

You're interested in receiving tax deductions for your building material donations.

If you want to claim more than \$5,000 of donation value on your taxes you need an appraisal report, which can be provided by a qualified appraisal company for a fee.

JOB SITE WALK

An estimator assesses the scope of work and what items can be donated for reuse.

FREE APPRAISAL ESTIMATE

The estimator coordinates with you and an appraisal company to provide a rough estimate of the value of your materials and potential tax deduction savings.

DECONSTRUCTION

We take a salvage-first approach to maximize what can be saved for donation. We work with local nonprofits to pick up the materials from the jobsite, or we will process the materials at our Warehouse and sell them on behalf of the non-profit The National Center for Craftsmanship.

DONATION RECEIPTS AND PICTURES

We share with you a folder of photos of materials recovered for donation and all donation receipts.

APPRAISAL REPORT

You receive the report from your appraiser, submit it to your CPA, and submit it with your taxes.

IRS FORM 8283

You and your CPA complete IRS Form 8283 and obtain necessary signatures from the appraiser and donation recipient.

PROJECT START

One week prior to project start, you'll receive an email introducing the crew and will have an opportunity to address any changes to scope, plans, or direction.

INVESTIGATION AND DECISION

You meet with your CPA or tax advisor to decide whether getting materials appraised is the right move for you.

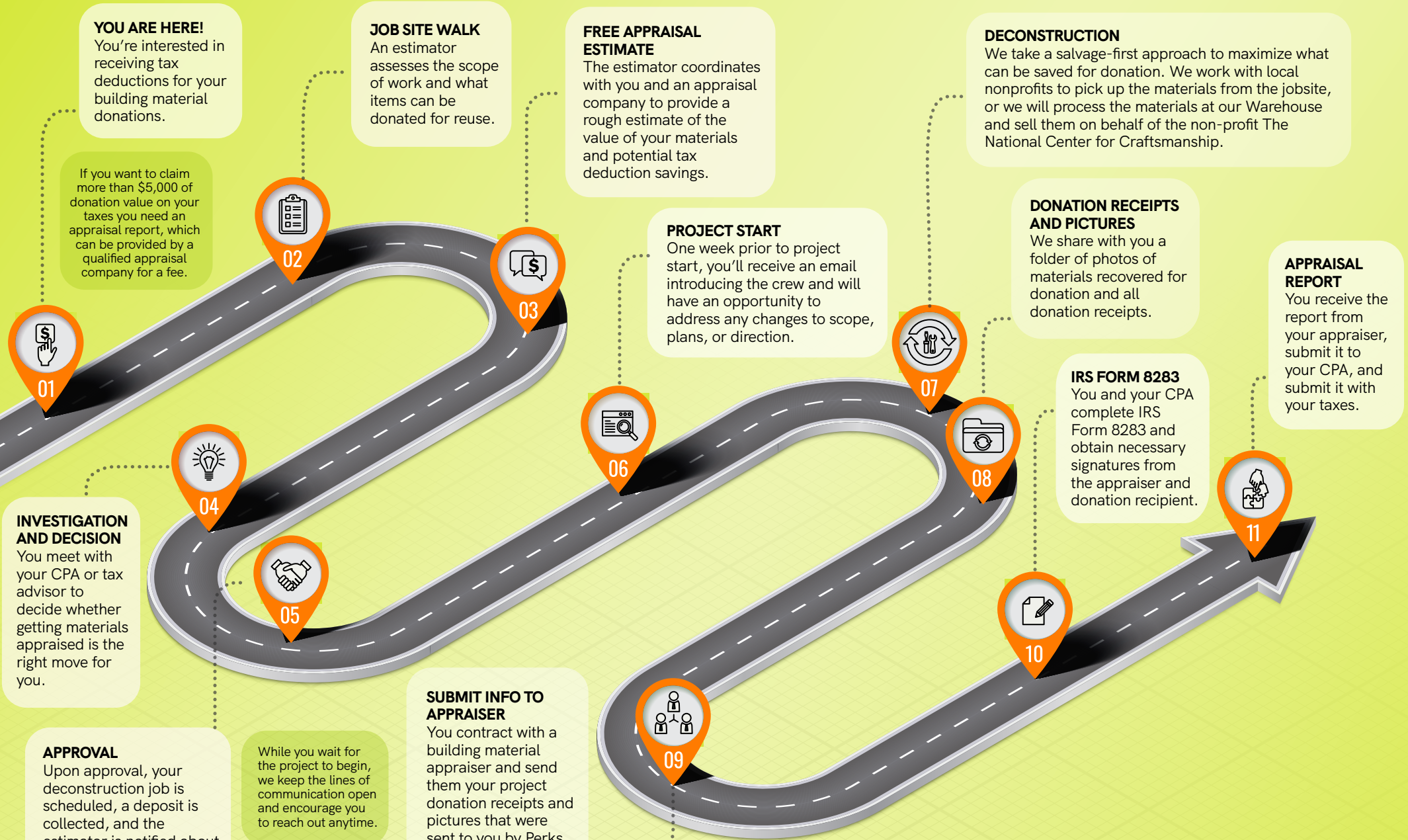
APPROVAL

Upon approval, your deconstruction job is scheduled, a deposit is collected, and the estimator is notified about the appraisal decision.

While you wait for the project to begin, we keep the lines of communication open and encourage you to reach out anytime.

SUBMIT INFO TO APPRAISER

You contract with a building material appraiser and send them your project donation receipts and pictures that were sent to you by Perks Deconstruction.



MATERIAL APPRAISAL & DONATION ROADMAP

